



UNITED KINGDOM OCCUPANCY SURVEY

Serviced Accommodation Summary Report
September 2017

UK OCCUPANCY SURVEY

- This study has been commissioned by the National Boards of England, Northern Ireland and Scotland and by Visit Wales (part of the Welsh Government) and supported by the Department for Culture, Media and Sport.
- The results have been compiled by The Research Solution.



UK BEDSPACE OCCUPANCY*

2013 - 2017

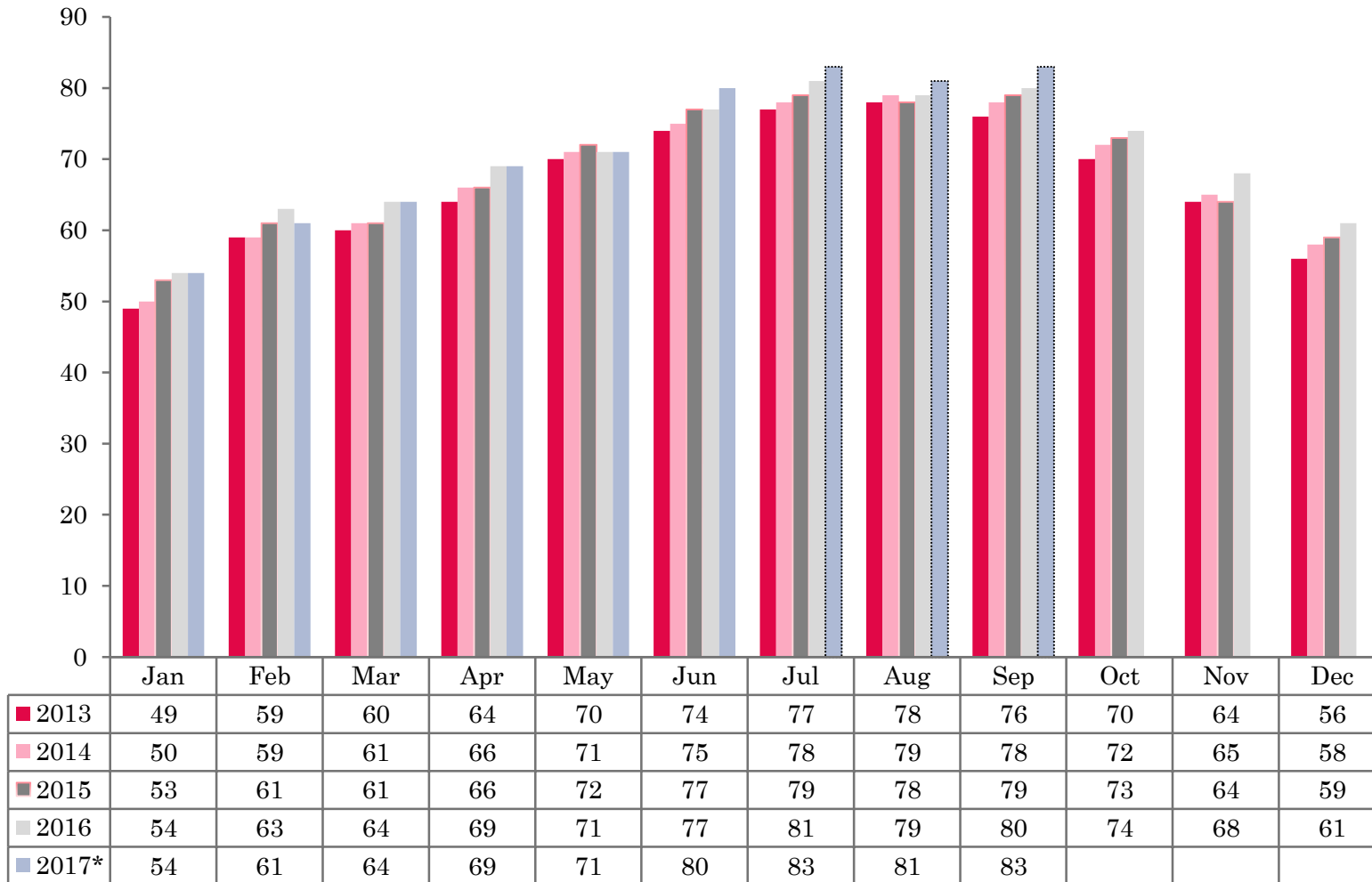


* See methodological note on slide 8



UK BEDROOM OCCUPANCY*

2013 - 2017



* See methodological note on slide 8



- ❖ 3,605 hotels, guesthouses and bed and breakfast establishments throughout the UK supplied data upon which the figures in this summary of results are based (see notes 2 and 3, on Slide 8 – sample sizes and calculation of rates).
- ❖ UK bedspace occupancy remained flat (-1%) when compared to the same period the previous year. Room occupancy levels in the UK rose to 83% during September 2017, a 3 percentage point increase in levels compared with 2016 data.



- Room occupancy rose by 3 percentage points, up from 80% to 83% when compared with the same period in 2016. Bedspace occupancy levels remained flat (-1%) when compared with September 2016.
- Room occupancy levels in England mirrored that of the UK as a whole, with room occupancy increasing by 3 percentage points and bedspace occupancy levels remaining static (-1%) when compared with the same period in 2016.
- Both room and bedspace occupancy levels in Northern Ireland increased by 2 percentage points when compared to the same period the previous year. Room occupancy was up from 72% to 74% and bedspace occupancy up from 54% in September 2016 to 56% in September 2017.
- Both room and bedspace occupancy in Wales remained static in both measures of occupancy during September 2017. Room occupancy was 71% and bedspace 55% during this month.
- Scotland bedspace occupancy fared better than all other countries in the UK during September 2017 up from 60% in September 2016 to 64% this month. Room occupancy rose by 2 percentage points up from 78% to 80% when compared with the same period in 2016.
- Across the UK as a whole, bedspace occupancy by non-UK residents had risen significantly when compared with the previous year, up 8 percentage points from 5% to 13% in September 2017. Northern Ireland increased by 3 percentage points when compared with September 2016, whilst Wales remained flat. (comparable figures for England and Scotland are no longer collected – (see notes 5b (changes in data collected) and 7 (methodological changes) Slide 8



Table 1: Occupancy Levels: September 2015 – 2017*

	Bedspace Occupancy*			Room Occupancy*			Sample Size*		
	%			%					
	2015	2016	2017*	2015	2016	2017*	2015	2016	2017*
England*	58	59	57	80	81	84	1855	1770	3051
Northern Ireland	45	54	56	63	72	74	173	168	201
Scotland	59	60	64	77	78	80	291	249	148
Wales	55	56	55	74	72	71	206	216	205
UK*	58	59	58	79	80	83	2525	2403	3605



* See methodological note on slide 8

Notes

1. The figures in this summary are based on data available within eight weeks of the end of the month. In some cases the boards will re-run the monthly analysis later in the year to include data which was received too late for inclusion in this summary. These later figures will be used in the 2017 Annual Summary.
2. The minimum target sample size for Northern Ireland, Scotland and Wales is 200 open establishments per month while in England the target minimum sample size is 750. Larger sample sizes may be used in some areas in order to enable Boards to undertake further analysis based on geographical sub-divisions of the data.
3. In the calculation of occupancy rates for the UK, occupancy rates from each country have been weighted using the number of bedspaces known to be available in the area.
4. **Occupancy rates:**

Bedspace occupancy	Percentage of available bedspaces which were occupied
Room occupancy	Percentage of available rooms which were occupied
Non-UK bedspace occupancy	Percentage of available bedspaces which were occupied by non-UK guests
Percentage of non-UK guests	Percentage of arrivals which were non-UK guests
Percentage of non-UK bednights	Percentage of occupied bedspaces which were occupied by non-UK guests
5. It should be noted that:
 - (a) because of changes in the data collected, it is no longer possible to provide UK/non UK figures for Scotland and England or figures relating to arrivals for Wales.
 - (b) from June 2010, English occupancy data includes additional occupancy information for the 100+ room hotel sector supplied by STR Global. Given the change in the structure of the sample, care should be taken in the interpretation of year-on-year changes.
6. Accuracy of the results: The statistical accuracy of the results depends upon the size of the sample, the variation in occupancy rates between establishments and (to a smaller extent) the size of the survey population. As the sample is self-selecting, it is not possible to calculate true statistical margins of error. However, it is likely that the results are accurate to between $\pm 5.9\%$ (sample of 50) to $\pm 1.6\%$ (sample of 650). As there continues to be a substantial core of survey participants providing data every month, the trends which are identified by the survey are believed to reflect accurately overall trends in the use of serviced accommodation.
7. * **Methodological note:** *From June 2017, the England Occupancy estimates are collected using a different methodology. Using this data makes the survey more robust but has caused a break in trends for England and the UK. From June 2017, the new methodology is based on the STR occupancy estimates which are continuously collected whereas prior to June 2017 the England Occupancy estimates were collected through a bespoke panel. This methodological change has affected trends. Meaningful comparison between estimates collected from June 2017 onwards and estimates collected prior to June 2017 can not be conducted for England and the UK. Data for Scotland, Wales and Northern Ireland remains unaffected by the change.*
- 8.



Background

As part of the EU Directive on Tourism Statistics adopted in January 1995, the UK is required to submit monthly occupancy rates for hotels and similar establishments (i.e. serviced accommodation) to Eurostat, the statistical office of the European Community. The responsibility for providing this data lies with the National Tourist Boards for England, Scotland and Northern Ireland and with Visit Wales (part of the Welsh Assembly Government), each of whom is responsible for the implementation of an occupancy survey in their area, carried out according to a common specification and standard, thus ensuring the production of comparable occupancy data for the whole of the UK.

The types of accommodation included in the survey are defined as *tourist accommodation which is arranged in rooms and where bed-making and cleaning services are provided*. This includes:

Hotels, motels, inns, guest houses, farm guest houses, bed and breakfast establishments

The types specifically excluded are:

Youth hostels and University accommodation

This summary has been compiled by The Research Solution (UK Survey Co-ordinator for 2017) from figures supplied by (or on behalf of) the National Tourist Boards of England, Northern Ireland (working with NISRA (the Northern Ireland Statistics and Research Agency), Scotland and Visit Wales (part of the Welsh Government).

Further information about the surveys in individual areas may be obtained from the relevant organisations:

VisitEngland (020 7578 1400)

Northern Ireland Tourist Board (02890 231 221)

VisitScotland (0131-472-2222)

Visit Wales (029 2047 9909)

