

Amadeus Air Traffic Trends Monthly Update

Data up to May 2026

VisitBritain/VisitEngland Research

July 2026



About this data

These slides show data from Amadeus Air Traffic showing an estimation of the total number of air passengers travelling to the UK from key source markets. Data shown is for passengers to/within the UK.

Some notes on this data:

- The data model for Air Traffic integrates bookings, schedules, public statistics, and airport official statistics. Amadeus monitors the accuracy of their data to ensure that it remains above 90% for each market. This modelling provides a useful complement to the ForwardKeys bookings data, which only includes indirect flight bookings and therefore a low coverage in Europe and some long haul markets.
- Inbound within the report refers to a sum of 9 key source markets; Australia, Canada, France, Germany, Italy, Netherlands, Saudi Arabia, Spain, and the USA. There is also data referring to the UK/domestic market. Our analysis excludes UK travellers returning to the UK from other destinations.
- Data is available from 2019 and up to 6 months ahead of the most recent reporting month.
- Data up to **May 2026** is shown in this report and the data was extracted on 25/06/26.
- Historic data may be adjusted at source in future releases.
- Please do not re-publish data from this report on any public platform, including combining the data with that from other sources, before contacting VisitBritain/VisitEngland for approval.

Disclaimer: All rights reserved; content based on data provided by Amadeus. The content is provided “as is” without any warranty as to accuracy, completeness, satisfactory quality or fitness for any particular purpose. It is strictly forbidden to extract, reproduce, republish or publicly display any content included in this document without the prior written authorisation of VisitBritain.

May 2026 | Air traffic to the UK saw strongest year-on-year growth of the last 12 months in May

- In May, inbound air traffic to the UK was **8% higher** than what was seen in May 2025, an uplift of the 4% year-on-year growth seen in April.
- Inbound air traffic to the UK in May 2026 also **exceeded 2024, 2023 and 2019**. Forecasts predict that inbound air traffic will surpass 2025 levels throughout the summer before dipping towards the end of the year, while air traffic is set to fall under 2019 levels over the upcoming 6 months.
- Domestic air traffic and inbound air traffic both saw year-on-year growth in May 2026. There was a mixed picture at the inbound market level, **long haul markets** are still seeing a dip in air traffic likely linked to the Middle East conflict, however, **short haul markets** saw strong growth continuing the pattern of year-on-year growth seen since summer 2025.
- Amongst the top UK cities for inbound air traffic **Birmingham, Nottingham and Glasgow** saw the most year-on-year growth. Amongst all UK cities, Durham, Stornoway and Newquay demonstrated the strongest growth in May 2026 compared to May 2019.

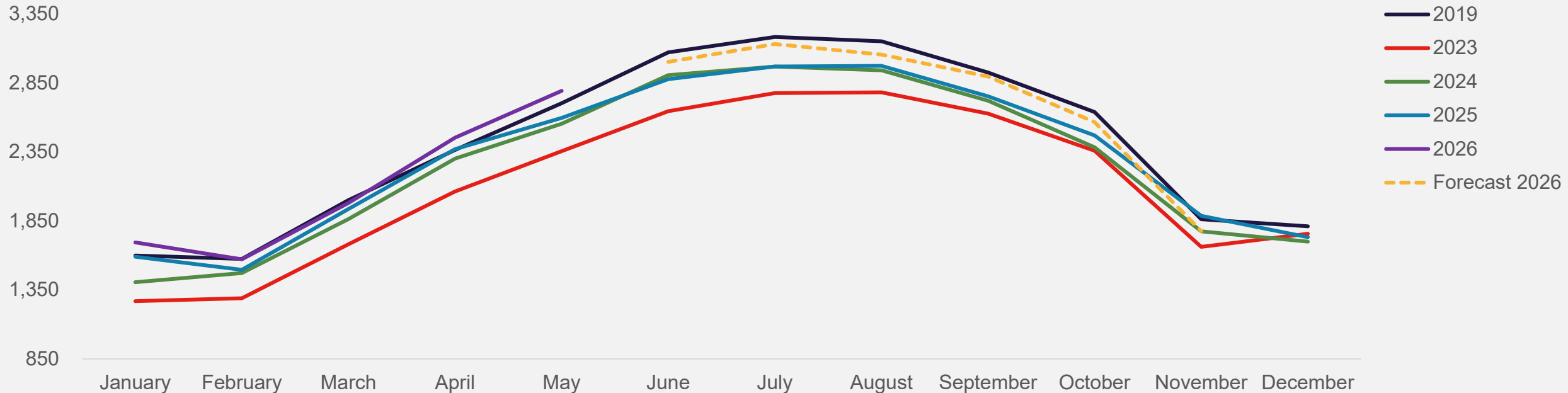
Notes: Amadeus air traffic data refreshed 25/06/26. The inbound total includes air traffic from Australia, Canada, France, Germany, Italy, Netherlands, Saudi Arabia, Spain, and the USA.

amadeus



Inbound air traffic trends (volume) | May 2026 exceeded 2025 levels as well as 2024, 2023 and 2019

Monthly estimated inbound air traffic to the UK from key markets (000s)



- In May 2026, inbound air traffic to the UK exceeded 2025, 2024, 2023 and 2019.
- All years demonstrate a consistent seasonal pattern, with air traffic continuing to rise approaching the peak of the summer months.
- Forecasts predict that inbound air traffic will remain above previous year levels over the summer months before dipping under 2025 levels in the Autumn, while air traffic is expected to consistently be below 2019 levels over the upcoming 6 months.

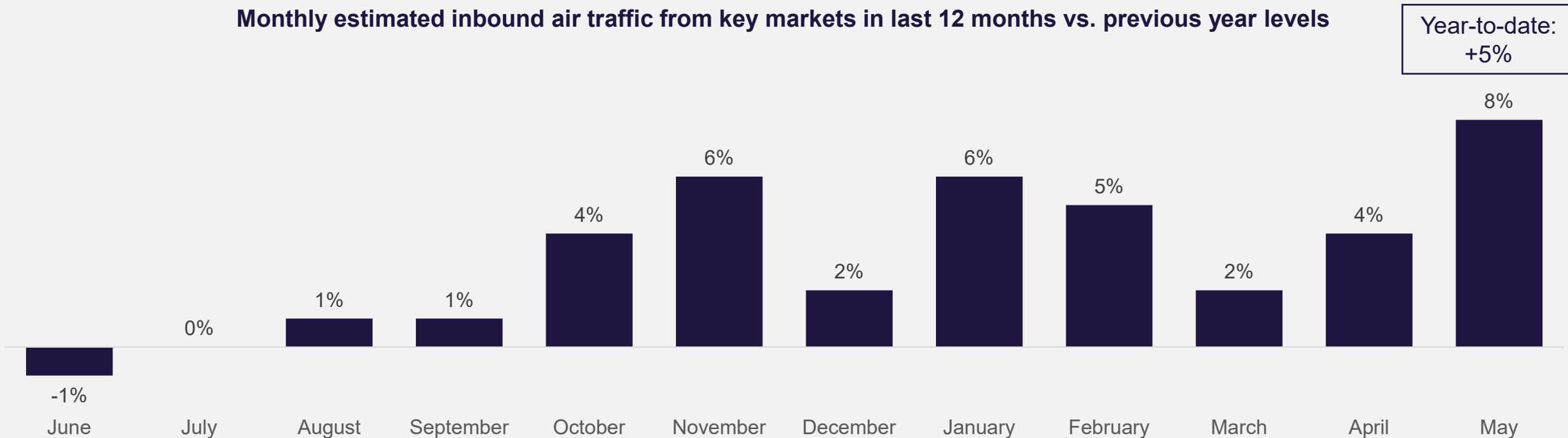
Notes: Amadeus air traffic data refreshed 25/06/26. The inbound total includes air traffic from Australia, Canada, France, Germany, Italy, Netherlands, Saudi Arabia, Spain, and the USA.

amadeus



Inbound air traffic vs. previous year | Year-on-year growth in air traffic to the UK saw an uplift in May 2026 vs recent months

Monthly estimated inbound air traffic from key markets in last 12 months vs. previous year levels



- May 2026 saw year-on-year growth of 8%; the highest growth seen in the last 12 months. The growth seen in May was an uplift on the more moderate growth of 4% in April and 2% in March, while also continuing a pattern of continuous year-on-year growth in inbound air traffic seen since August 2025.
- There has been a positive start to 2026 for air traffic to the UK with year-on-year growth of 5% so far this year (January – May 2026).

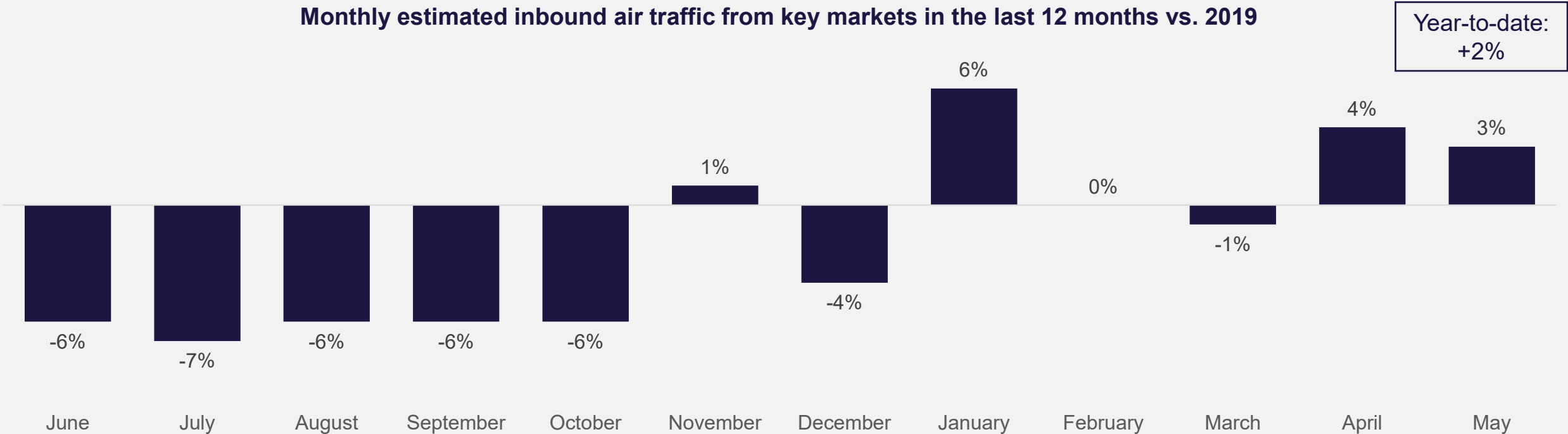
Notes: Amadeus air traffic data refreshed 25/06/26. % growth vs. previous year shown. The inbound total includes air traffic from Australia, Canada, France, Germany, Italy, Netherlands, Saudi Arabia, Spain, and the USA.

amadeus



Inbound air traffic vs. pre-COVID | Air traffic to the UK in May 2026 surpasses 2019 levels for the second consecutive month

Monthly estimated inbound air traffic from key markets in the last 12 months vs. 2019



- Inbound air traffic to the UK in May 2026 was above 2019 levels for the second consecutive month, the first time this has happened in the last 12 months. 2026 has so far only seen one month where air traffic has fallen below 2019 levels, showing a reverse in trend compared to the consistent year-on-year declines seen over the second half of 2025.
- Air traffic is currently tracking above 2019 levels for the year-to-date in 2026 with growth of 2%.

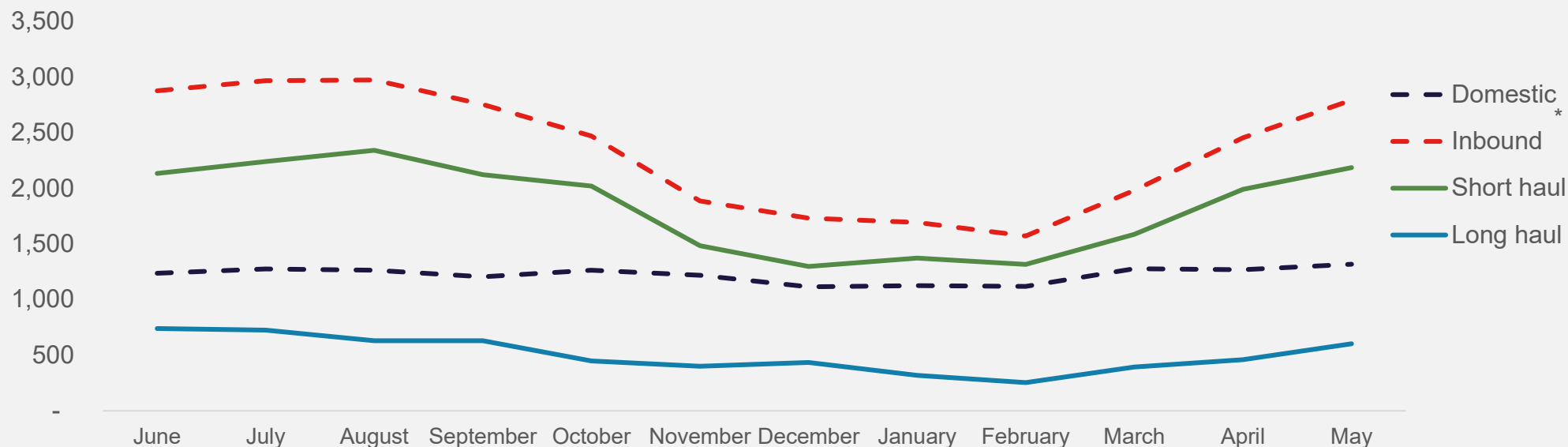
Notes: Amadeus air traffic data refreshed 25/06/26. % growth vs. 2019 shown. The inbound total includes air traffic from Australia, Canada, France, Germany, Italy, Netherlands, Saudi Arabia, Spain, and the USA.

amadeus



Origin market trends (volume) | The clear seasonal pattern in inbound air traffic continued in May 2026, with air traffic rising in the spring months

Monthly estimated inbound air traffic to the UK in 2025/26 (000s)



- Inbound air traffic has consistently demonstrated higher volumes vs. domestic, with inbound air traffic continuing an upturn in spring ahead of the peak of the summer months conforming with seasonal trends, whereas domestic air traffic remained relatively level.
- In May 2026, short haul travel saw a more gradual uplift in air traffic compared to previous months, while long haul traffic continued to rise at a steady pace.

Notes: Amadeus air traffic data refreshed 25/06/26. Inbound, short haul, and long haul are shown as averages to support the visual display of the data. The short haul total includes air traffic from France, Germany, Italy, Netherlands and Spain. The long haul total includes air traffic from Australia, Canada, Saudi Arabia, and the USA. *Domestic air traffic includes UK residents travelling within the UK, and may include foreign visitors who travel domestically with a break in between their arrival to the UK of more than 24 hours.

Origin market trends vs. previous year | Both domestic and inbound air traffic saw year-on-year growth in May 2026, with short haul travel seeing strong growth while long haul continues to dip

Monthly estimated inbound air traffic in 2025/26 vs. previous year

Last 12 months	Domestic*	Inbound	Short haul	Long haul	Australia	Canada	France	Germany	Italy	Netherlands	Saudi Arabia	Spain	USA
June	6%	-1%	1%	-7%	-7%	-8%	7%	4%	11%	-1%	2%	-3%	-8%
July	4%	0%	-1%	5%	-1%	3%	1%	4%	7%	0%	15%	-6%	5%
August	4%	1%	2%	-1%	-1%	3%	2%	11%	10%	8%	25%	-3%	-4%
September	4%	1%	2%	-1%	-5%	5%	4%	10%	10%	-3%	10%	-2%	-2%
October	7%	4%	4%	1%	-4%	7%	5%	9%	10%	1%	19%	1%	-1%
November	10%	6%	8%	2%	-13%	7%	7%	8%	13%	6%	14%	6%	1%
December	6%	2%	4%	-4%	-7%	0%	3%	10%	15%	5%	-8%	-2%	-4%
January	7%	6%	7%	5%	15%	8%	14%	6%	13%	-11%	22%	6%	1%
February	3%	5%	5%	5%	9%	7%	4%	9%	7%	-3%	-2%	5%	5%
March	5%	2%	4%	-4%	-15%	-3%	1%	8%	4%	-6%	21%	6%	-5%
April	6%	4%	5%	-3%	-8%	5%	-1%	-5%	12%	-5%	-27%	9%	-2%
May	8%	8%	11%	-4%	-7%	9%	4%	4%	14%	-2%	-18%	16%	-5%
Year-to-date	6%	5%	7%	-1%	-3%	6%	4%	4%	10%	-5%	-3%	9%	-2%

- May 2026 saw both domestic and inbound air traffic exceed May 2025 levels by 8%. Within inbound air traffic, short haul markets saw strong growth at 11% continuing the trend of stable growth. Long haul air traffic remains below previous year levels likely due to the Middle East conflict.
- In general, long haul markets continue to decline vs 2025 with Canada the exception seeing growth of 9%. Saudi Arabia (-18%) and Australia (-7%) are two markets in which air traffic has been impacted by the Middle East conflict, however, they did see slightly weaker declines in May compared to previous months. The USA stayed under 2025 levels at -5%.
- Spain (+16%) and Italy (+14%) saw the highest year-on-year growth of all markets in May 2026. Within the other short haul markets, France and Germany saw slightly lower growth at 4%.

Notes: Amadeus air traffic data refreshed 25/06/26. % growth vs. previous year shown. The short haul total includes air traffic from France, Germany, Italy, Netherlands and Spain. The long haul total includes air traffic from Australia, Canada, Saudi Arabia, and the USA. *Domestic air traffic includes UK residents travelling within the UK, and may include foreign visitors who travel domestically with a break in between their arrival to the UK of more than 24 hours

amadeus



Origin market trends vs. pre-COVID | Inbound air traffic showing growth to the UK in May 2026 compared to 2019, with short haul and long haul traffic both up

Monthly estimated inbound air traffic in 2025/26 vs. 2019

Last 12 months Domestic*	Inbound	Short haul	Long haul	Australia	Canada	France	Germany	Italy	Netherlands	Saudi Arabia	Spain	USA	
June	-8%	-6%	-10%	5%	-7%	-9%	-2%	-18%	-1%	-31%	62%	-9%	7%
July	-8%	-7%	-11%	11%	-7%	-5%	-4%	-16%	-4%	-31%	76%	-11%	12%
August	-8%	-6%	-9%	8%	-3%	2%	1%	-18%	2%	-32%	59%	-9%	8%
September	-8%	-6%	-10%	13%	-3%	-1%	-5%	-19%	-1%	-32%	100%	-8%	15%
October	-7%	-6%	-10%	11%	-10%	2%	-3%	-21%	-1%	-33%	149%	-6%	10%
November	-4%	1%	-2%	17%	-6%	8%	4%	-12%	-1%	-25%	266%	6%	9%
December	-1%	-4%	-5%	-1%	-20%	-2%	3%	-5%	-1%	-32%	106%	-1%	-1%
January	-4%	6%	3%	24%	39%	11%	23%	-22%	5%	-34%	182%	17%	13%
February	-6%	0%	-2%	10%	13%	-1%	12%	-25%	2%	-31%	118%	11%	7%
March	-5%	-1%	-2%	2%	-13%	0%	-4%	-21%	0%	-30%	93%	15%	1%
April	-5%	4%	2%	12%	-18%	5%	-1%	-21%	15%	-25%	69%	11%	15%
May	-6%	3%	4%	2%	-11%	4%	4%	-15%	18%	-32%	133%	11%	0%
Year-to-date	-5%	2%	1%	8%	-3%	4%	5%	-21%	9%	-30%	118%	13%	6%

- In May 2026, inbound air traffic surpassed May 2019 by 3%, however, domestic air traffic continued to see levels below 2019.
- Among international origin markets, long haul air traffic showed more moderate growth vs 2019 of 2% compared to the 12% increase seen in April 2026. Saudi Arabia saw the highest growth of any inbound market at 133% vs 2019, with Canada (+4%) the only other long haul market to see growth in air traffic. Air traffic from the USA was level with 2019. While air traffic from Australia was down 11% in May as traffic continues to be affected by the Middle East conflict and the disruption caused to connecting flights.
- Short haul air traffic was up slightly more than long haul travel in May 2026; 4% above 2019 levels. Italy saw the highest growth from short haul markets compared to May 2019 at 18%, followed closely by Spain (+11%).

Notes: Amadeus air traffic data refreshed 25/06/26. % growth vs. 2019 shown. The short haul total includes air traffic from France, Germany, Italy, Netherlands and Spain. The long haul total includes air traffic from Australia, Canada, Saudi Arabia, and the USA. *Domestic air traffic includes UK residents travelling within the UK, and may include foreign visitors who travel domestically with a break in between their arrival to the UK of more than 24 hours

Destination city trends vs. previous year | Birmingham, Nottingham and Glasgow seeing strongest year-on-year growth in May 2026

Year-on-year change in air traffic for top ranked UK cities in 2025/26 vs. previous year

Last 12 months	London	Manchester	Edinburgh	Birmingham	Bristol	Glasgow	Nottingham	Liverpool	Leeds	Newcastle upon Tyne
June	0%	-6%	3%	-5%	-1%	-12%	-12%	19%	3%	-4%
July	4%	-7%	8%	-16%	-6%	-13%	-4%	5%	-6%	-15%
August	5%	-6%	11%	-8%	1%	-12%	-16%	10%	-8%	-13%
September	4%	-4%	11%	-6%	-2%	-4%	-7%	5%	-12%	-4%
October	6%	-4%	7%	-4%	3%	0%	-9%	19%	6%	-9%
November	8%	3%	18%	2%	6%	-11%	27%	-22%	25%	-11%
December	3%	-3%	12%	-3%	2%	-17%	-18%	19%	8%	-2%
January	8%	5%	14%	1%	-3%	3%	-12%	0%	-2%	12%
February	6%	0%	12%	7%	3%	3%	-13%	3%	-4%	4%
March	1%	2%	14%	8%	-1%	-2%	-3%	9%	1%	7%
April	2%	2%	9%	12%	1%	6%	2%	12%	3%	11%
May	4%	8%	12%	23%	14%	19%	22%	-2%	15%	7%
Year-to-date	4%	3%	12%	11%	4%	7%	4%	4%	5%	8%

Top growing cities in May 2026 vs. May 2019

City	% change
Durham	158%
Stornoway	147%
Newquay	116%
Bournemouth	90%
Shetland Islands	63%
Kirkwall	36%
Edinburgh	29%
Bristol	28%
Manchester	14%
Inverness	10%

- In May 2026, the top ranked UK cities by air traffic were London, Manchester and Edinburgh. When examining the year-on-year growth in air traffic of the top ranked cities, in May 2026 Birmingham saw the most growth at 23%, followed by Nottingham (+22%), Glasgow (+19%), Leeds (+15%) and Bristol (+14%). Liverpool was the only top UK city to see a decline in air traffic in May 2026 compared to May 2025.
- Looking at cities which have seen the most growth in inbound air traffic in May 2026 vs. May 2019, Durham ranks first, followed by Stornoway and Newquay.

Notes: Amadeus air traffic data refreshed 25/06/26. The inbound total includes air traffic from Australia, Canada, France, Germany, Italy, Netherlands, Saudi Arabia, Spain, and the USA.



For more information, please contact

Research@visitbritain.org