

Amadeus Air Traffic Trends Monthly Update Data up to April 2026

VisitBritain/VisitEngland Research

June 2026



About this data

These slides show data from Amadeus Air Traffic showing an estimation of the total number of air passengers travelling to the UK from key source markets. Data shown is for passengers to/within the UK.

Some notes on this data:

- The data model for Air Traffic integrates bookings, schedules, public statistics, and airport official statistics. Amadeus monitors the accuracy of their data to ensure that it remains above 90% for each market. This modelling provides a useful complement to the ForwardKeys bookings data, which only includes indirect flight bookings and therefore a low coverage in Europe and some long haul markets.
- Inbound within the report refers to a sum of 9 key source markets; Australia, Canada, France, Germany, Italy, Netherlands, Saudi Arabia, Spain, and the USA. There is also data referring to the UK/domestic market. Our analysis excludes UK travellers returning to the UK from other destinations.
- Data is available from 2019 and up to 6 months ahead of the most recent reporting month.
- Data up to **April 2026** is shown in this report and the data was extracted on 26/05/26.
- Historic data may be adjusted at source in future releases.
- Please do not re-publish data from this report on any public platform, including combining the data with that from other sources, before contacting VisitBritain/VisitEngland for approval.

Disclaimer: All rights reserved; content based on data provided by Amadeus. The content is provided “as is” without any warranty as to accuracy, completeness, satisfactory quality or fitness for any particular purpose. It is strictly forbidden to extract, reproduce, republish or publicly display any content included in this document without the prior written authorisation of VisitBritain.

April 2026 | Air traffic to the UK continued to see year-on-year growth in April

- In April, inbound air traffic to the UK was **3% higher** than what was seen in April 2025, a slight uplift of the 2% year-on-year growth seen in March.
- Inbound air traffic to the UK in April 2026 also **exceeded 2024, 2023 and 2019**. Forecasts predict that inbound air traffic will remain above 2025 levels throughout the summer but fall below 2019 levels over the upcoming 6 months.
- Domestic air traffic in the UK saw higher year-on-year growth than inbound air traffic in April 2026, with **long haul markets** seeing a decline in air traffic likely linked to the Middle East conflict. **Short haul markets** continued the pattern of year-on-year growth seen since summer 2025.
- Amongst the top UK cities for inbound air traffic **Newcastle upon Tyne, Birmingham, and Nottingham** saw the most year-on-year growth. Amongst all UK cities, Shetland Islands, Durham and Newquay demonstrated the strongest growth in April 2026 compared to April 2019.

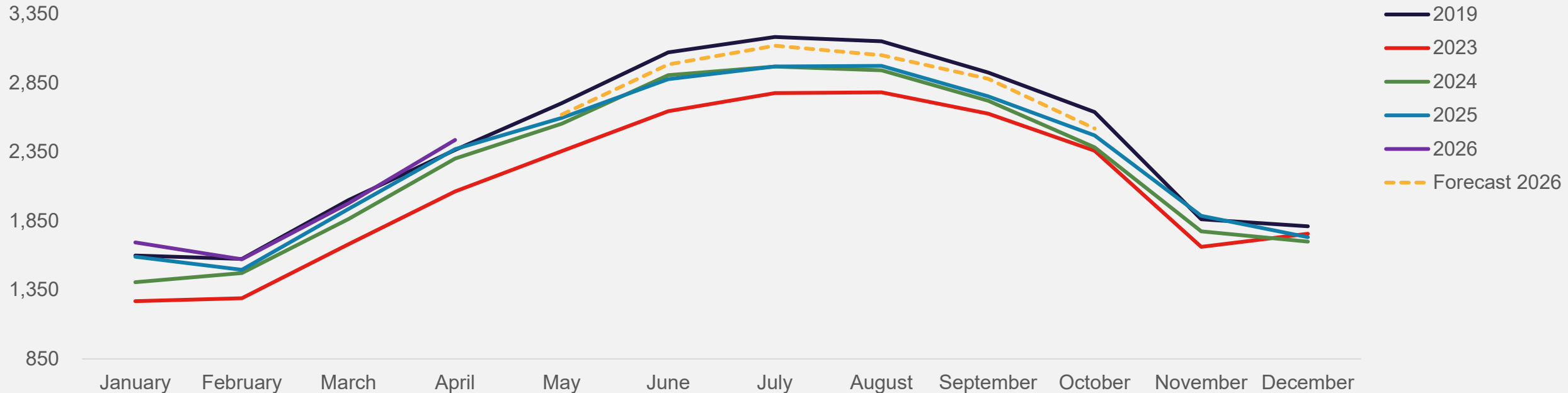
Notes: Amadeus air traffic data refreshed 26/05/26. The inbound total includes air traffic from Australia, Canada, France, Germany, Italy, Netherlands, Saudi Arabia, Spain, and the USA.

amadeus



Inbound air traffic trends (volume) | April 2026 exceeded 2025 levels as well as 2024, 2023 and 2019

Monthly estimated inbound air traffic to the UK from key markets (000s)



- In April 2026, inbound air traffic to the UK exceeded 2025, 2024, 2023 and 2019.
- All years demonstrate a consistent seasonal pattern, with traffic peaking in the summer months.
- Forecasts for the next 6 months (May 2026 – October 2026) predict that inbound air traffic will continue to exhibit year-on-year growth but will fall behind 2019 levels over the upcoming 6 months.

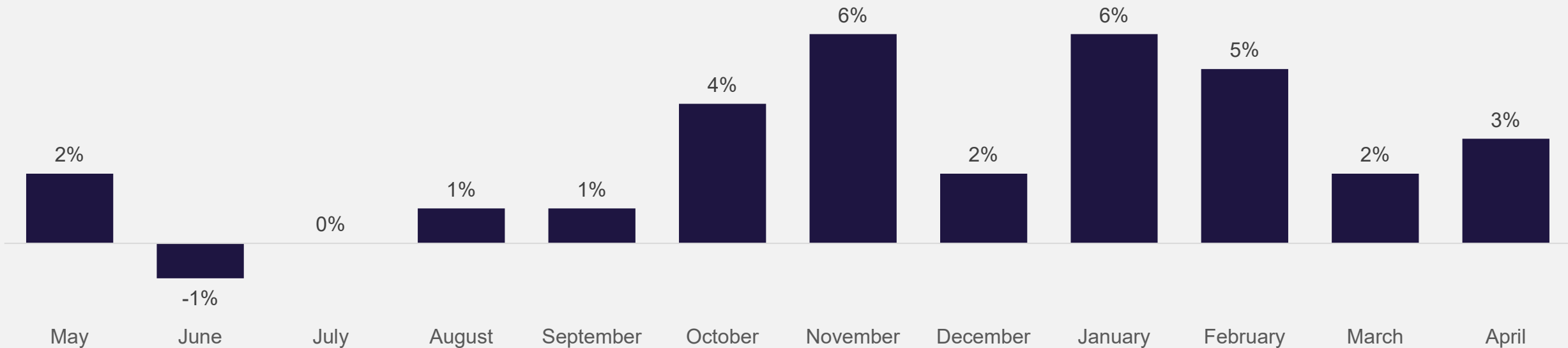
Notes: Amadeus air traffic data refreshed 26/05/26. The inbound total includes air traffic from Australia, Canada, France, Germany, Italy, Netherlands, Saudi Arabia, Spain, and the USA.

amadeus



Inbound air traffic vs. previous year | Growth in air traffic to the UK compared to previous year levels continued into April 2026

Monthly estimated inbound air traffic from key markets in last 12 months vs. previous year levels



- April 2026 saw year-on-year growth of 3%; a slight uplift from the growth seen in March (+2%). The strong start to 2026 continues a pattern of growth seen since August 2025, with June 2025 the only month to see a decline in the last year.

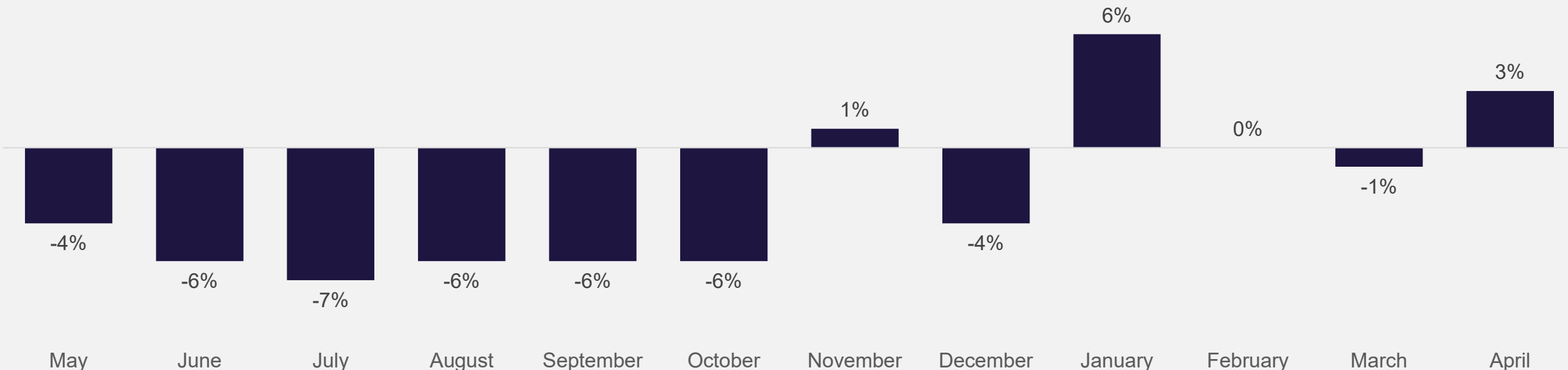
Notes: Amadeus air traffic data refreshed 26/05/26. % growth vs. previous year shown. The inbound total includes air traffic from Australia, Canada, France, Germany, Italy, Netherlands, Saudi Arabia, Spain, and the USA.

amadeus



Inbound air traffic vs. pre-COVID | Air traffic to the UK in April 2026 surpassed April 2019 levels

Monthly estimated inbound air traffic from key markets in the last 12 months vs. 2019



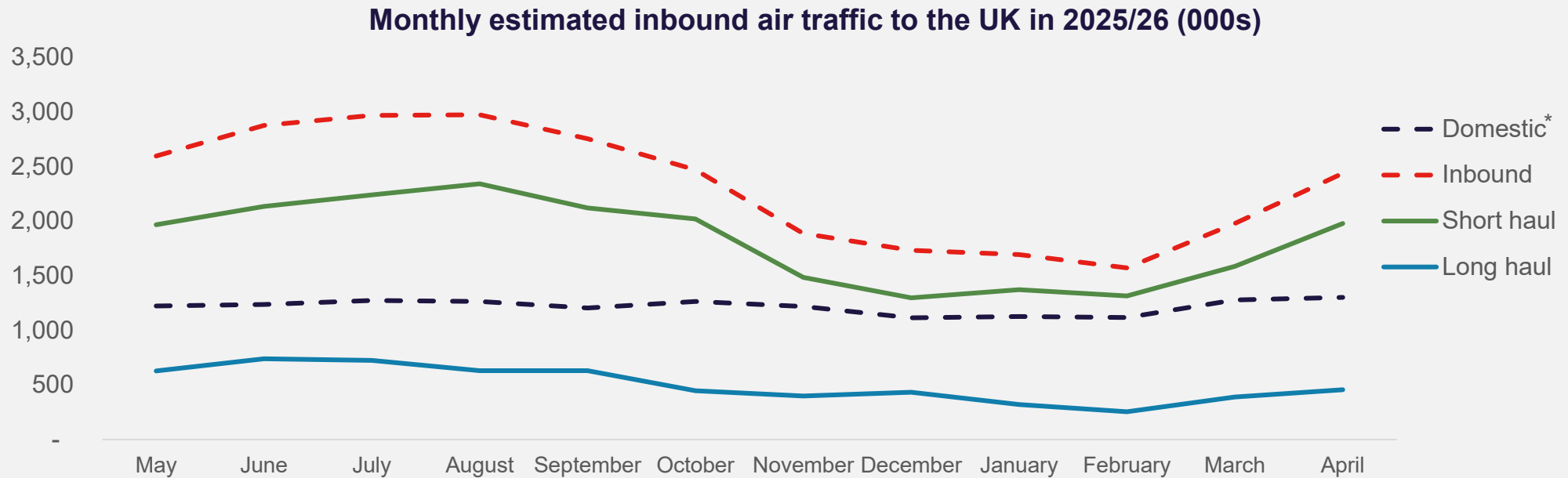
- Inbound air traffic to the UK in April 2026 was above 2019 levels, the first month of growth since January 2026. Additionally, April 2026 was only the third month air traffic surpassed 2019 levels in the last 12 months.

Notes: Amadeus air traffic data refreshed 26/05/26. % growth vs. 2019 shown. The inbound total includes air traffic from Australia, Canada, France, Germany, Italy, Netherlands, Saudi Arabia, Spain, and the USA.

amadeus



Origin market trends (volume) | The clear seasonal pattern in inbound air traffic continued in April 2026, with air traffic seeing an upturn heading into spring



- Inbound air traffic has consistently demonstrated higher volumes vs. domestic, with inbound air traffic seeing an upturn heading into the spring months conforming with seasonal trends, whereas domestic air traffic remained relatively level.
- In April 2026, short haul travel saw a stronger upturn in air traffic than long haul travel, with its seasonal pattern more similar to the general inbound trend.

Notes: Amadeus air traffic data refreshed 26/05/26. Inbound, short haul, and long haul are shown as averages to support the visual display of the data. The short haul total includes air traffic from France, Germany, Italy, Netherlands and Spain. The long haul total includes air traffic from Australia, Canada, Saudi Arabia, and the USA. *Domestic air traffic includes UK residents travelling within the UK, and may include foreign visitors who travel domestically with a break in between their arrival to the UK of more than 24 hours.

amadeus



Origin market trends vs. previous year | Both domestic and inbound air traffic saw year-on-year growth in April 2026, with Spain and Italy leading market growth

Monthly estimated inbound air traffic in 2025/26 vs. previous year

| | Domestic* | Inbound | Short haul | Long haul | Australia | Canada | Germany | Spain | France | Italy | Neth. | Saudi Arabia | USA |
|---------------------|-----------|-----------|------------|------------|------------|-----------|-----------|-----------|-----------|-----------|------------|--------------|------------|
| May | 2% | 2% | 3% | -2% | -7% | -7% | 3% | -1% | 5% | 15% | 4% | 36% | -3% |
| June | 6% | -1% | 1% | -7% | -7% | -8% | 4% | -3% | 7% | 11% | -1% | 2% | -8% |
| July | 4% | 0% | -1% | 5% | -1% | 3% | 4% | -6% | 1% | 7% | 0% | 15% | 5% |
| August | 4% | 1% | 2% | -1% | -1% | 3% | 11% | -3% | 2% | 10% | 8% | 25% | -4% |
| September | 4% | 1% | 2% | -1% | -5% | 5% | 10% | -2% | 4% | 10% | -3% | 10% | -2% |
| October | 7% | 4% | 4% | 1% | -4% | 7% | 9% | 1% | 5% | 10% | 1% | 19% | -1% |
| November | 10% | 6% | 8% | 2% | -13% | 7% | 8% | 6% | 7% | 13% | 6% | 14% | 1% |
| December | 6% | 2% | 4% | -4% | -7% | 0% | 10% | -2% | 3% | 15% | 5% | -8% | -4% |
| January | 7% | 6% | 7% | 5% | 19% | 8% | 6% | 6% | 14% | 13% | -11% | 22% | 0% |
| February | 3% | 5% | 5% | 5% | 10% | 7% | 9% | 5% | 4% | 7% | -2% | -2% | 5% |
| March | 5% | 2% | 4% | -5% | -27% | -3% | 8% | 6% | 1% | 3% | -6% | 26% | -5% |
| April | 9% | 3% | 5% | -4% | -9% | 4% | -8% | 10% | -4% | 10% | -9% | -29% | -3% |
| Year-to-date | 6% | 4% | 5% | -1% | -3% | 3% | 3% | 7% | 3% | 8% | -7% | 1% | -2% |

- April 2026 saw both domestic and inbound air traffic exceed April 2025 levels. Within inbound air traffic, short haul markets saw 5% growth, while long haul markets fell by 4% likely due to the Middle East conflict.
- All long haul markets apart from Canada demonstrated year-on-year declines in April 2026, with Canada seeing growth of 4% compared to the same month last year. Saudi Arabia saw the largest year-on-year decline of 29% in April, while air traffic from Australia was down 9%. The April decline seen by Australia was more moderate than March, where air traffic was down 27%. The US fell just below 2025 levels at -3%.
- Spain and Italy saw the highest year-on-year growth of all markets in April 2026, both at +10%. The Netherlands, Germany and France all saw single digit declines.

Notes: Amadeus air traffic data refreshed 26/05/26. % growth vs. previous year shown. The short haul total includes air traffic from France, Germany, Italy, Netherlands and Spain. The long haul total includes air traffic from Australia, Canada, Saudi Arabia, and the USA. *Domestic air traffic includes UK residents travelling within the UK, and may include foreign visitors who travel domestically with a break in between their arrival to the UK of more than 24 hours

Origin market trends vs. pre-COVID | Inbound air traffic showing growth to the UK in April 2026 compared to 2019, while domestic air traffic saw a decline

Monthly estimated inbound air traffic in 2025/26 vs. 2019

| | Domestic* | Inbound | Short haul | Long haul | Australia | Canada | Germany | Spain | France | Italy | Neth. | Saudi Arabia | USA |
|---------------------|------------|-----------|------------|------------|------------|-----------|-------------|------------|-----------|-----------|-------------|--------------|-----------|
| May | -13% | -4% | -6% | 6% | -4% | -5% | -18% | -4% | 0% | 4% | -31% | 184% | 5% |
| June | -8% | -6% | -10% | 5% | -7% | -9% | -18% | -9% | -2% | -1% | -31% | 62% | 7% |
| July | -8% | -7% | -11% | 11% | -7% | -5% | -16% | -11% | -4% | -4% | -31% | 76% | 12% |
| August | -8% | -6% | -9% | 8% | -3% | 2% | -18% | -9% | 1% | 2% | -32% | 59% | 8% |
| September | -8% | -6% | -10% | 13% | -3% | -1% | -19% | -8% | -5% | -1% | -32% | 100% | 15% |
| October | -7% | -6% | -10% | 11% | -10% | 2% | -21% | -6% | -3% | -1% | -33% | 149% | 10% |
| November | -4% | 1% | -2% | 17% | -6% | 8% | -12% | 6% | 4% | -1% | -25% | 266% | 9% |
| December | -1% | -4% | -5% | -1% | -20% | -2% | -5% | -1% | 3% | -1% | -32% | 106% | -1% |
| January | -4% | 6% | 3% | 24% | 44% | 11% | -22% | 17% | 23% | 5% | -34% | 181% | 12% |
| February | -6% | 0% | -2% | 10% | 14% | -1% | -25% | 11% | 12% | 2% | -30% | 117% | 7% |
| March | -5% | -1% | -2% | 2% | -26% | 0% | -21% | 15% | -4% | 0% | -30% | 101% | 1% |
| April | -3% | 3% | 2% | 11% | -18% | 4% | -23% | 13% | -5% | 12% | -28% | 64% | 14% |
| Year-to-date | -4% | 2% | 0% | 11% | -1% | 3% | -23% | 14% | 5% | 5% | -30% | 114% | 9% |

- In April 2026, inbound air traffic surpassed April 2019 by 3%, however, domestic air traffic continued to see levels below 2019.
- Among international origin markets, long haul air traffic showed growth of 11% compared to April 2019. Saudi Arabia saw the highest growth of any inbound market at +64% vs 2019, with the US (+14%) and Canada (+4%) seeing more moderate growth. While air traffic from Australia was down 18% in April, this was a slightly weaker decline than the -26% seen in March. These declines are likely linked to the Middle East conflict and the disruption caused to connecting flights from the region's airports.
- Short haul air traffic was slightly up in April 2026; 2% above 2019 levels. Spain saw the highest growth from short haul markets compared to April 2019 at +13%, followed closely by Italy (+12%).

Notes: Amadeus air traffic data refreshed 26/05/26. % growth vs. 2019 shown. The short haul total includes air traffic from France, Germany, Italy, Netherlands and Spain. The long haul total includes air traffic from Australia, Canada, Saudi Arabia, and the USA. *Domestic air traffic includes UK residents travelling within the UK, and may include foreign visitors who travel domestically with a break in between their arrival to the UK of more than 24 hours

amadeus



Destination city trends vs. previous year | Newcastle upon Tyne, Birmingham and Nottingham seeing double digit growth in April 2026

Year-on-year change in air traffic for top ranked UK cities in 2025/26 vs. previous year

| | London | Manchester | Edinburgh | Birmingham | Bristol | Glasgow | Newcastle upon Tyne | Liverpool | Leeds | Nottingham |
|-----------|--------|------------|-----------|------------|---------|---------|---------------------|-----------|-------|------------|
| May | 4% | 0% | 2% | -8% | -8% | -7% | -2% | 1% | -1% | -5% |
| June | 0% | -6% | 3% | -5% | -1% | -12% | -4% | 19% | 3% | -12% |
| July | 4% | -7% | 8% | -16% | -6% | -13% | -15% | 5% | -6% | -4% |
| August | 5% | -6% | 11% | -8% | 1% | -12% | -13% | 10% | -8% | -16% |
| September | 4% | -4% | 11% | -6% | -2% | -4% | -4% | 5% | -12% | -7% |
| October | 6% | -4% | 7% | -4% | 3% | 0% | -9% | 19% | 6% | -9% |
| November | 8% | 3% | 18% | 2% | 6% | -11% | -11% | -22% | 25% | 27% |
| December | 3% | -3% | 12% | -3% | 2% | -17% | -2% | 19% | 8% | -18% |
| January | 8% | 5% | 14% | 1% | -3% | 3% | 12% | 0% | -2% | -12% |
| February | 6% | 0% | 12% | 7% | 3% | 3% | 4% | 3% | -4% | -13% |
| March | 1% | 1% | 13% | 8% | -1% | -2% | 7% | 9% | 0% | -3% |
| April | 0% | 2% | 9% | 13% | 2% | 7% | 13% | 9% | 4% | 10% |

Top growing cities in April 2026 vs. April 2019

| City | % change |
|---------------------|----------|
| Shetland Islands | 224% |
| Durham | 149% |
| Newquay | 130% |
| Bournemouth | 103% |
| Kirkwall | 77% |
| Islay | 71% |
| Stornoway | 54% |
| Edinburgh | 27% |
| Newcastle upon Tyne | 20% |
| Manchester | 19% |

- In April 2026, the top ranked UK cities by air traffic were London, Manchester and Edinburgh. When examining the year-on-year growth in air traffic of the top ranked cities, in April 2026 Newcastle upon Tyne and Birmingham both saw the most growth at +13%, followed by Nottingham (+10%), Edinburgh (+9%), Liverpool (+9%) and Glasgow (+7%). None of the top UK cities saw a decline in air traffic in April 2026 compared to April 2025.
- Looking at cities which have seen the most growth in inbound air traffic in April 2026 vs. April 2019, Shetland Islands ranks first, followed by Durham and Newquay.

Notes: Amadeus air traffic data refreshed 26/05/26. The inbound total includes air traffic from Australia, Canada, France, Germany, Italy, Netherlands, Saudi Arabia, Spain, and the USA.



For more information, please contact

Research@visitbritain.org