

England Occupancy Survey

November 2017 Results



Summary of Results

Room occupancy in November decreased 1% to 78%, whilst bedspace occupancy decreased by -1% when compared to November 2016 to 53%. The change in room occupancy was led by an increase in **room supply** of 2.0% compared to an increase of only 0.5% in **demand** compared to the same month in 2016.

RevPar, which is the total room revenue divided by the total number of available rooms, remained unchanged in November at £75.29 compared to the previous year.

City/large town room occupancy decreased -2% to 80% whilst bedspace decreased by -1% to 54%.

Seaside increased by +1% to 70% for room occupancy and remained unchanged at 50% for bedspace occupancy.

Small town room occupancy decreased -1% to 70% and remained unchanged for bedspace occupancy at 50%, with **countryside** occupancy decreasing by -2% for room occupancy to 64% while bedspace occupancy decreased -1% to 43%.

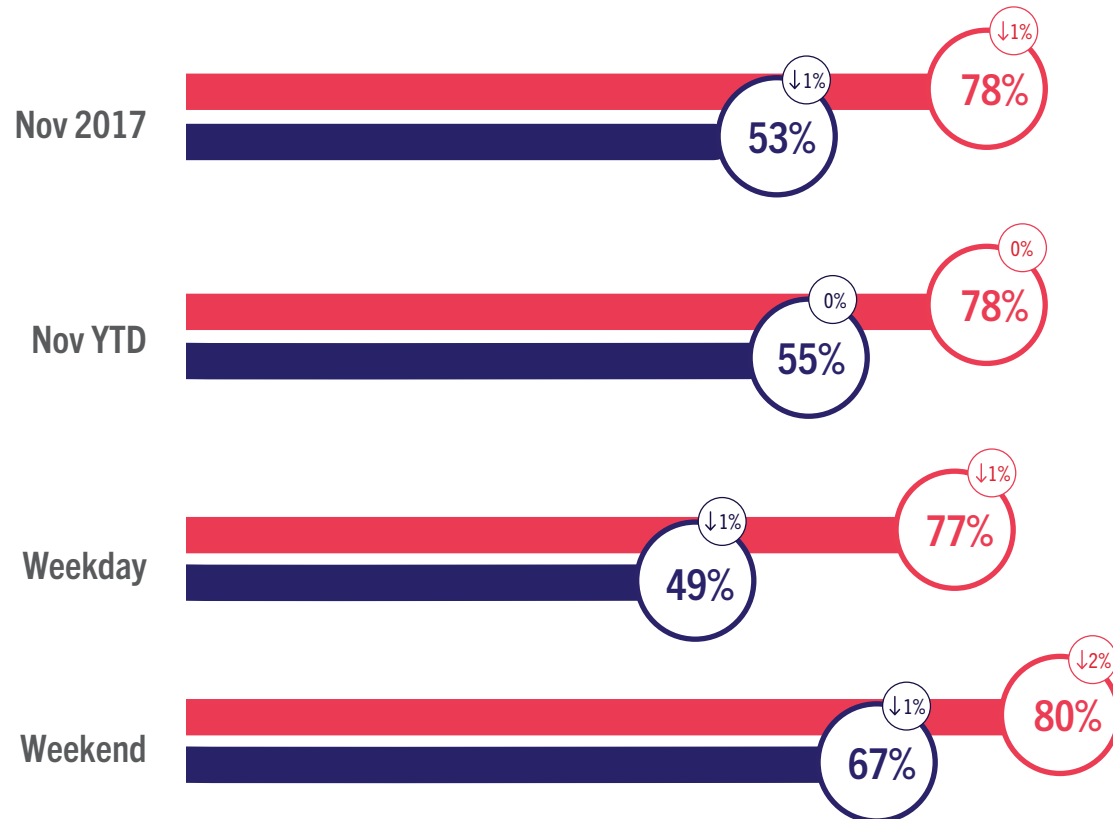
Looking at room and bedspace occupancy rates by **establishment size** all categories remained relatively unchanged with changes of 2% or less.

Looking at occupancy by **region**, the largest shift for room occupancy came from London with a -3% decrease. All other regions remained relatively unchanged with a 2% or less change. For bedspace occupancy, the largest shift also came from London which decreased by -2%, but all other regions remained relatively unchanged with 1% or less change.

England Room and Bedspace Occupancy

At a glance - November 2017

● Room Space ● Bedspace ⓘ % Change



England Room and Bedspace Occupancy

Data Tables

| Room Occupancy | 2015 | 2016 | 2017 |
|----------------|------|------|------|
| Nov | 77% | 79% | 78% |
| Nov YTD | 78% | 78% | 78% |
| Weekday | 75% | 78% | 77% |
| Weekend | 81% | 82% | 80% |

| Bedspace Occupancy | 2015 | 2016 | 2017 |
|--------------------|------|------|------|
| Nov | 53% | 54% | 53% |
| Nov YTD | 56% | 55% | 55% |
| Weekday | 48% | 49% | 49% |
| Weekend | 66% | 68% | 67% |

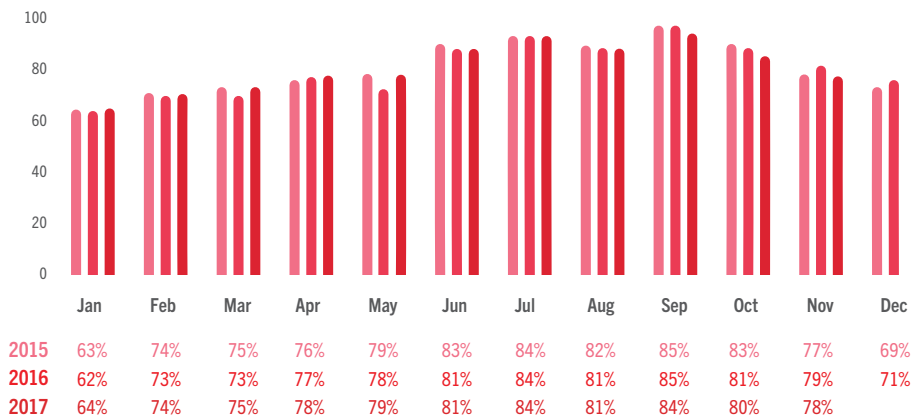
| | 2015 | 2016 | 2017 |
|-------------|-------|------|------|
| Room supply | 1.1% | 1.5% | 2.0% |
| Room demand | -0.8% | 4.6% | 0.5% |

Table to the left shows the room supply and room demand year on year relative percentage change.

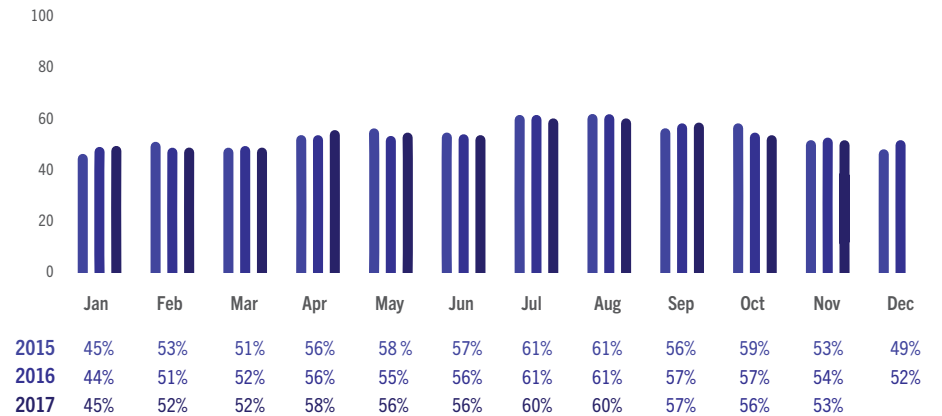


England Room and Bedspace Occupancy

Data Tables



England Room Occupancy by Month



England Bedspace Occupancy by Month



England ADR and RevPAR

At a glance - November 2017

● ADR ● RevPAR ⓘ % Change





England ADR and RevPAR

Data Tables

ADR

| | 2015 | 2016 | 2017 |
|---------|--------|--------|--------|
| Nov | £92.35 | £95.01 | £96.57 |
| Weekday | £93.66 | £95.87 | £97.46 |
| Weekend | £88.97 | £92.75 | £94.22 |

RevPAR

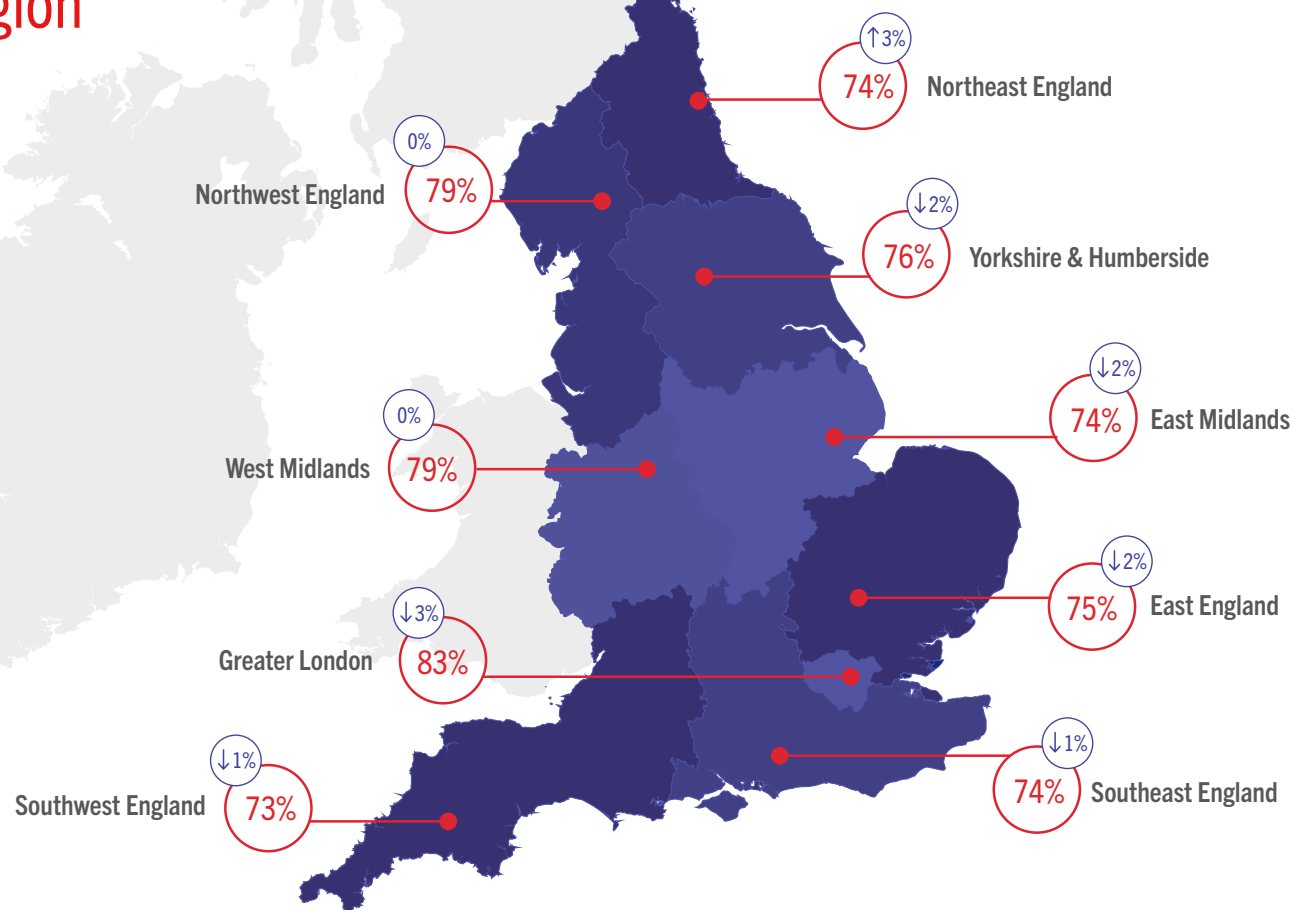
| | 2015 | 2016 | 2017 |
|---------|--------|--------|--------|
| Nov | £70.94 | £75.19 | £75.29 |
| Weekday | £70.68 | £74.78 | £75.14 |
| Weekend | £71.67 | £76.32 | £75.73 |



Room Occupancy By Region

At a glance - November 2017

*The figures represented within the graphic contain the current month and year occupancy figures as well as the year on year relative percentage change figures.



Occupancy By Region

Data Tables - November 2017

| Room Occupancy | 2015 | 2016 | 2017 |
|------------------------|------|------|------|
| East England | 74% | 77% | 75% |
| East Midlands | 73% | 75% | 74% |
| Greater London | 82% | 86% | 83% |
| Northeast England | 74% | 72% | 74% |
| Northwest England | 77% | 79% | 79% |
| Southeast England | 74% | 75% | 74% |
| Southwest England | 71% | 74% | 73% |
| West Midlands | 76% | 78% | 79% |
| Yorkshire & Humberside | 77% | 78% | 76% |

| Bedspace Occupancy | 2015 | 2016 | 2017 |
|------------------------|------|------|------|
| East England | 51% | 53% | 52% |
| East Midlands | 50% | 51% | 50% |
| Greater London | 57% | 60% | 58% |
| Northeast England | 51% | 50% | 51% |
| Northwest England | 53% | 54% | 54% |
| Southeast England | 51% | 51% | 51% |
| Southwest England | 48% | 50% | 49% |
| West Midlands | 50% | 52% | 52% |
| Yorkshire & Humberside | 54% | 54% | 53% |

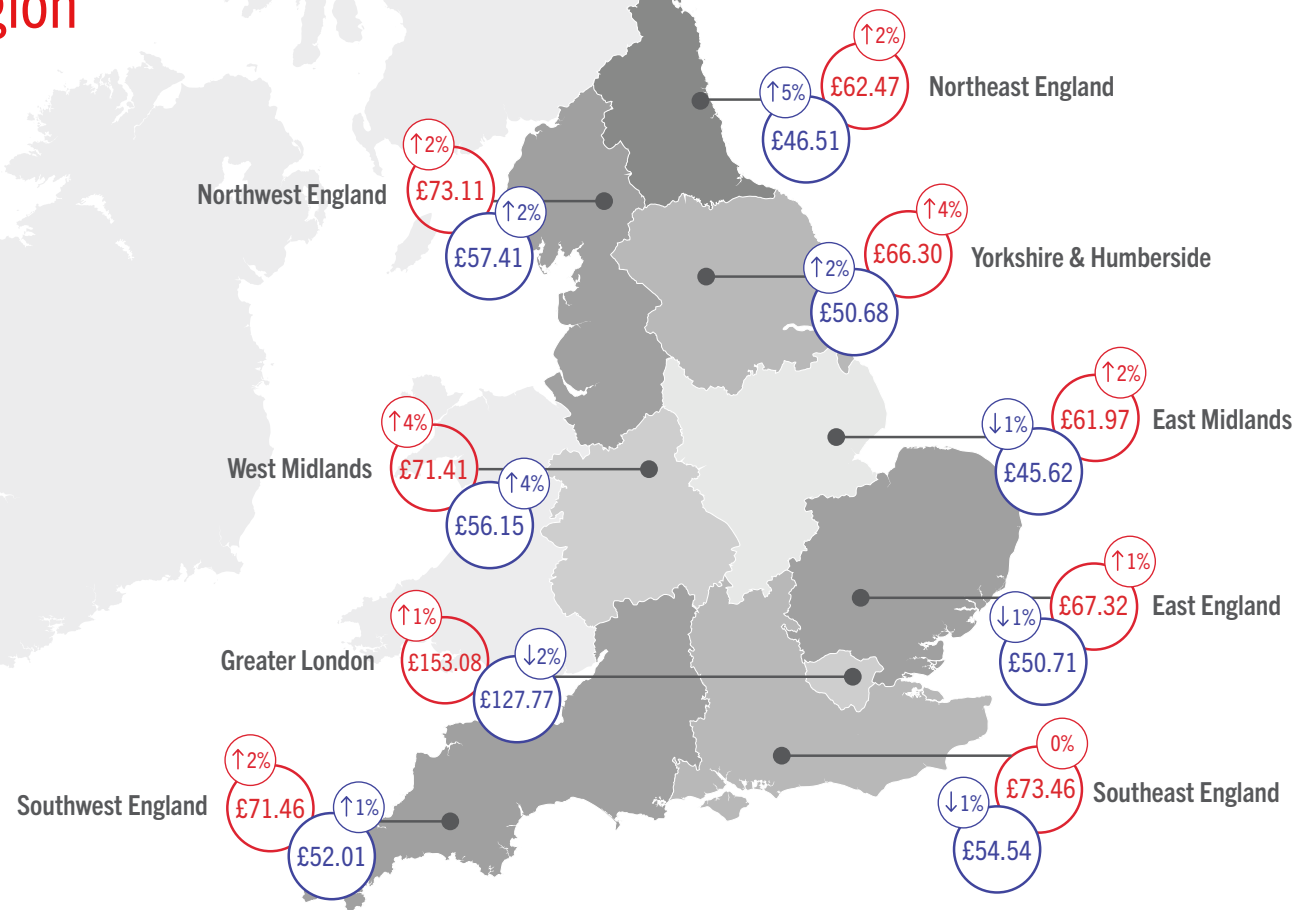


ADR and RevPAR By Region

At a glance - November 2017

*The figures represented within the graphic contain the current month and year revenue figures as well as the year on year relative percentage change figures.

● ADR ● RevPAR ⌚ % Change



ADR and RevPAR By Region

Data Tables - November 2017

| ADR | 2015 | 2016 | 2017 |
|------------------------|---------|---------|---------|
| East England | £64.49 | £66.70 | £67.32 |
| East Midlands | £58.62 | £60.88 | £61.97 |
| Greater London | £147.58 | £151.32 | £153.08 |
| Northeast England | £63.27 | £61.39 | £62.47 |
| Northwest England | £69.20 | £71.46 | £73.11 |
| Southeast England | £72.08 | £73.10 | £73.46 |
| Southwest England | £67.38 | £69.86 | £71.46 |
| West Midlands | £65.56 | £68.67 | £71.41 |
| Yorkshire & Humberside | £61.79 | £63.87 | £66.30 |

| RevPAR | 2015 | 2016 | 2017 |
|------------------------|---------|---------|---------|
| East England | £48.03 | £51.22 | £50.71 |
| East Midlands | £42.97 | £45.88 | £45.62 |
| Greater London | £120.70 | £130.14 | £127.77 |
| Northeast England | £46.71 | £44.44 | £46.51 |
| Northwest England | £53.41 | £56.26 | £57.41 |
| Southeast England | £53.48 | £55.00 | £54.54 |
| Southwest England | £48.03 | £51.45 | £52.01 |
| West Midlands | £49.56 | £53.76 | £56.15 |
| Yorkshire & Humberside | £47.47 | £49.85 | £50.68 |

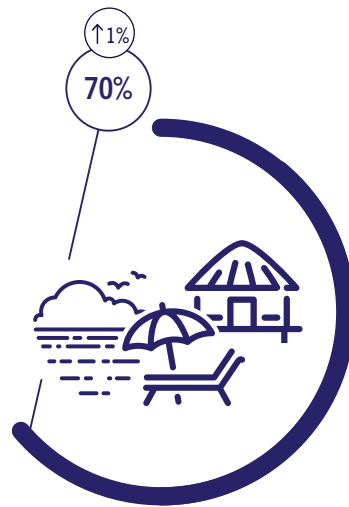


Room Occupancy By Destination Type

At a glance - November 2017



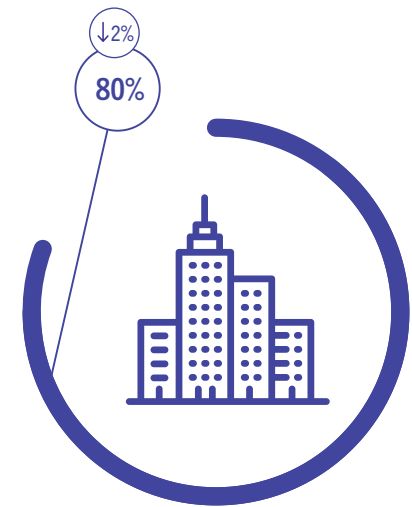
Countryside



Seaside



Small Town



City / Large Town

Occupancy By Location Type

Data Tables - November 2017

Room Occupancy

| | 2015 | 2016 | 2017 |
|-------------------|------|------|------|
| City / Large Town | 79% | 81% | 80% |
| Small Town | 70% | 71% | 70% |
| Countryside | 68% | 66% | 64% |
| Seaside | 69% | 69% | 70% |

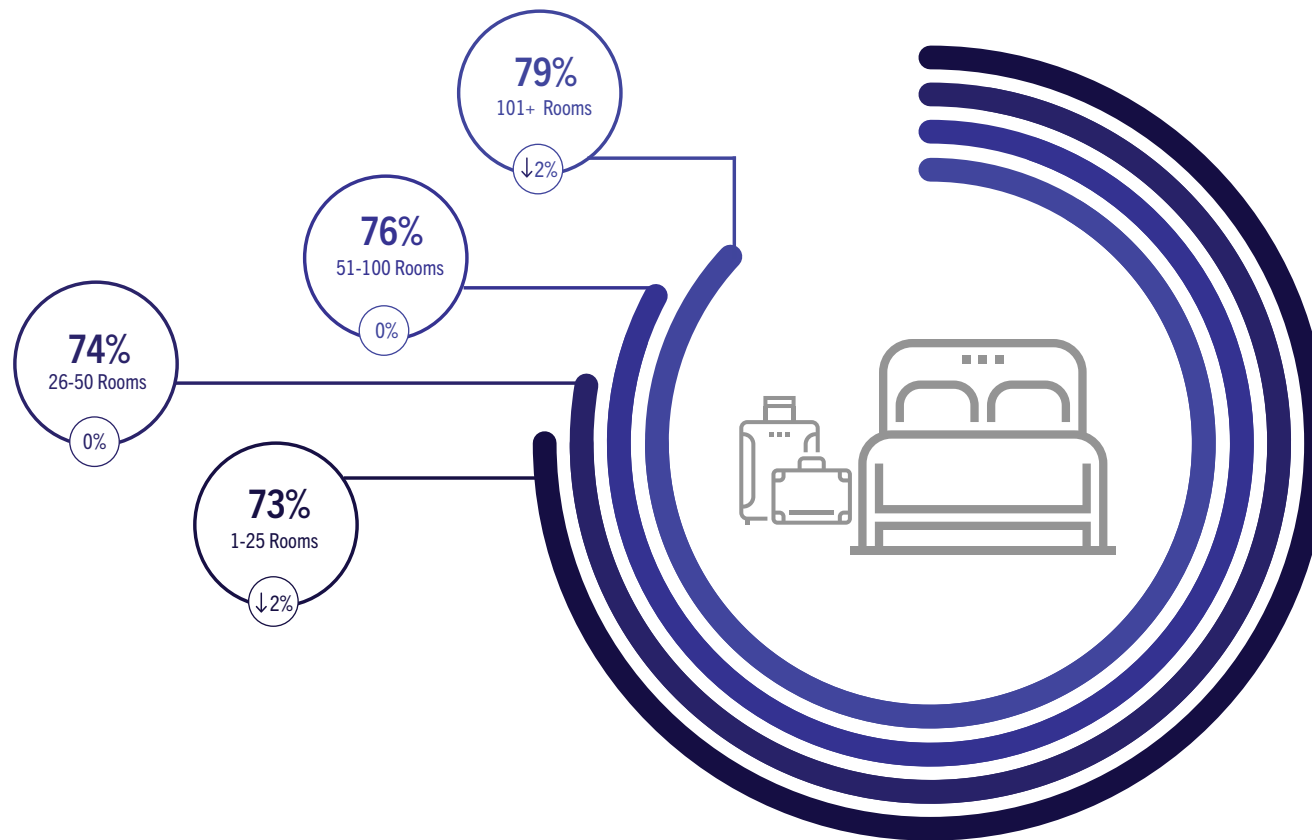
Bedspace Occupancy

| | 2015 | 2016 | 2017 |
|-------------------|------|------|------|
| City / Large Town | 53% | 55% | 54% |
| Small Town | 50% | 50% | 50% |
| Countryside | 45% | 44% | 43% |
| Seaside | 50% | 50% | 50% |



Room Occupancy By Number of Rooms

At a glance - November 2017



Occupancy By Number of Rooms

Data Tables - November 2017

| Room Occupancy | 2015 | 2016 | 2017 |
|----------------|------|------|------|
| 1-25 Rooms | 75% | 75% | 73% |
| 26-50 Rooms | 74% | 74% | 74% |
| 51-100 Rooms | 75% | 77% | 76% |
| 101+ Rooms | 78% | 81% | 79% |

| Bedspace Occupancy | 2015 | 2016 | 2017 |
|--------------------|------|------|------|
| 1-25 Rooms | 53% | 53% | 52% |
| 26-50 Rooms | 52% | 52% | 52% |
| 51-100 Rooms | 54% | 55% | 55% |
| 101+ Rooms | 53% | 55% | 54% |



Methodology Statement

In July 2017 a change of suppliers was made to the occupancy data. The data is now collected via a syndicated panel of over 3000 hotels and other accommodation businesses provided by Hotel Market Data and Benchmarking Company - STR.

STR collects the following performance metrics from participating properties either on a daily or monthly basis through their online platform or data feeds:

- Number of room available
- Number of rooms sold
- Total room revenue

These baseline figures are used to calculate the three most relevant

metrics within the accommodation industry namely: Occupancy, Average Daily Rate and Revenue per Available Room.

To allow a meaningful comparison of year on year trends, VisitEngland and STR have included historical data from STR's own participating properties in the reports from July 2017 onwards. The historical data displayed in these reports is not consistent with reports published prior to the July 2017 report.

Further details about STR's panel and data collection can be found in our methodology note.

All previous months' reports and data can be found on the VisitEngland website.



For information on how to contribute and participate in the England Occupancy Study and benefit from STR's property level benchmarking reports, please email scote@str.com.

For more information on STR's other available products and pricing:

strglobal.com
+44 (0) 207 922 1930
hotelinfo@str.com

Benchmarking
↑ your world