

Guidance notes on using Excel spreadsheet based on IMF World Economic Outlook Database, April 2009

Choosing how to view data

If you wish to see the actual numbers then it is recommended to stick with the 'Tables' worksheet, whereas if you wish to get a pictorial representation of the results, particularly helpful for comparing countries, use the 'Chart' worksheet.

Choosing measures

You can choose from a number of different measures regardless of whether viewing data as a table or a chart. To do this simply click on the 'Measure' dropdown box, then choose from the available list.

Choosing countries

You can select one or more country from the Country drop-down box in either the 'Table' or 'Chart' worksheet. If you are viewing data in the 'Chart' worksheet it is recommended that you do not select more than three or four countries in order for the chart to be interpretable.

If you wish to see a comparison for many countries in chart format select a limited number of years from the 'Year' dropdown box at the foot of the chart, for example you could select all years from 2005-2010, or every fifth year to be displayed.

Note that if you choose a measure such as population or employment it is recommended that groups of countries with broadly similar numbers are selected, for example a chart showing the population of China and Luxembourg would not be very useful.

If you have selected three or four countries and now wish to choose a different set, the quickest way to do this is to click on the Country dropdown menu, then click in the Show All box **twice**, on the first click all countries will be ticked and on the second click none will be ticked – you can then start selecting a new group of countries.

Choosing years

The default setting is for the table and chart to show all years from 1990 through to 2013, to show a limited number of years click on the 'Years' dropdown menu and, click the 'Show All' box option to unselect all years then select the years you wish to view data for.

There is a Pivot Table toolbar box obstructing the view of the table/chart

Simply click on the 'X' in the top right corner of this toolbox to close it, you will still be able to select countries and measures in the way described above.

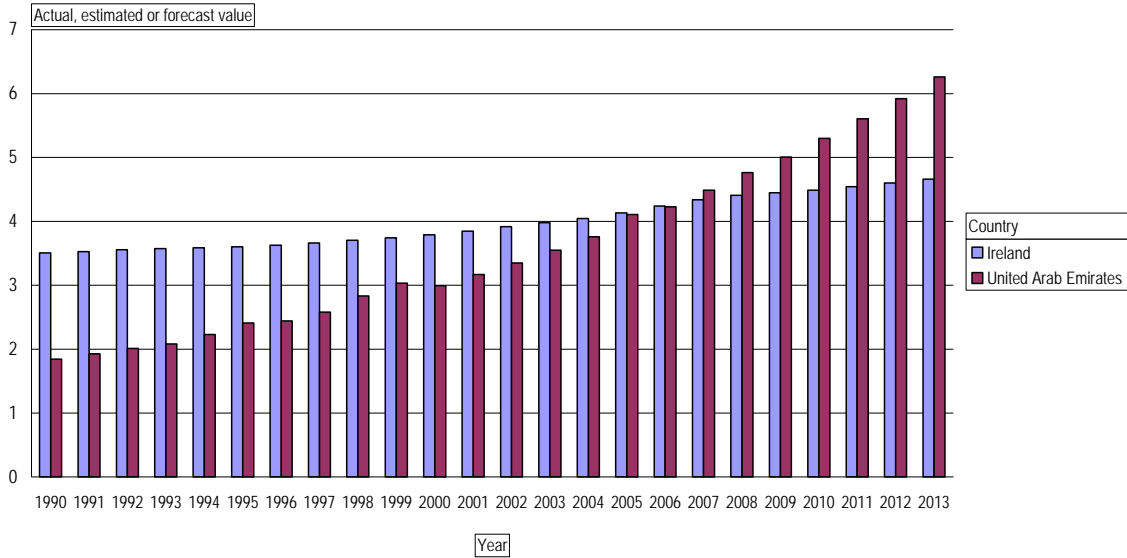
No data appears in the table/chart

If having selected a country and measure you find a table or chart containing no information this indicates that no data on this topic is held on this country within the IMF World Economic Outlook Database. In many instances forecast figures are not available beyond 2009.

Example charts that can be produced

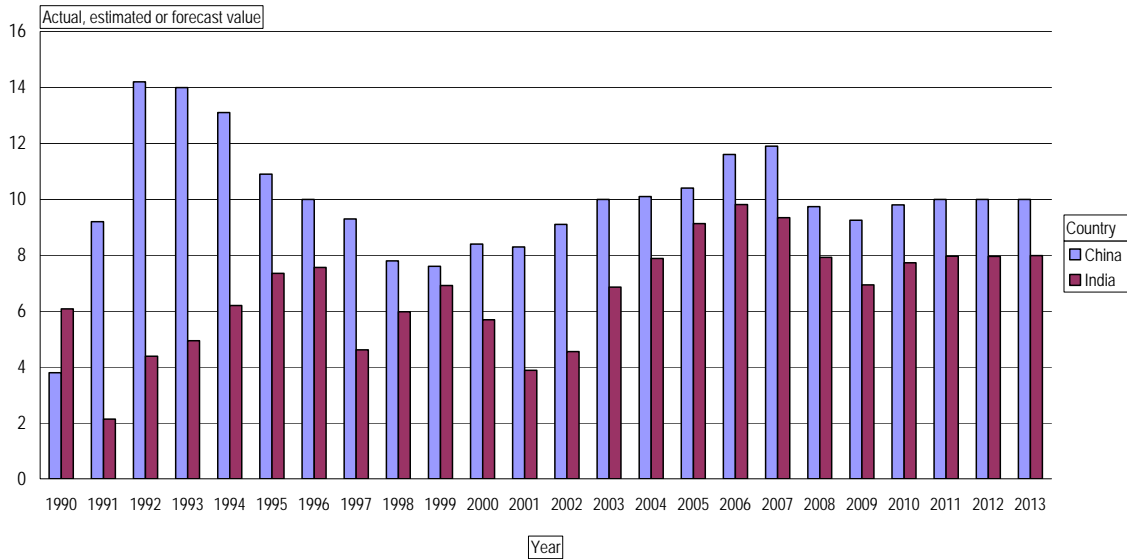
Measure | Population, millions

Data from IMF World Economic Outlook, October 2008



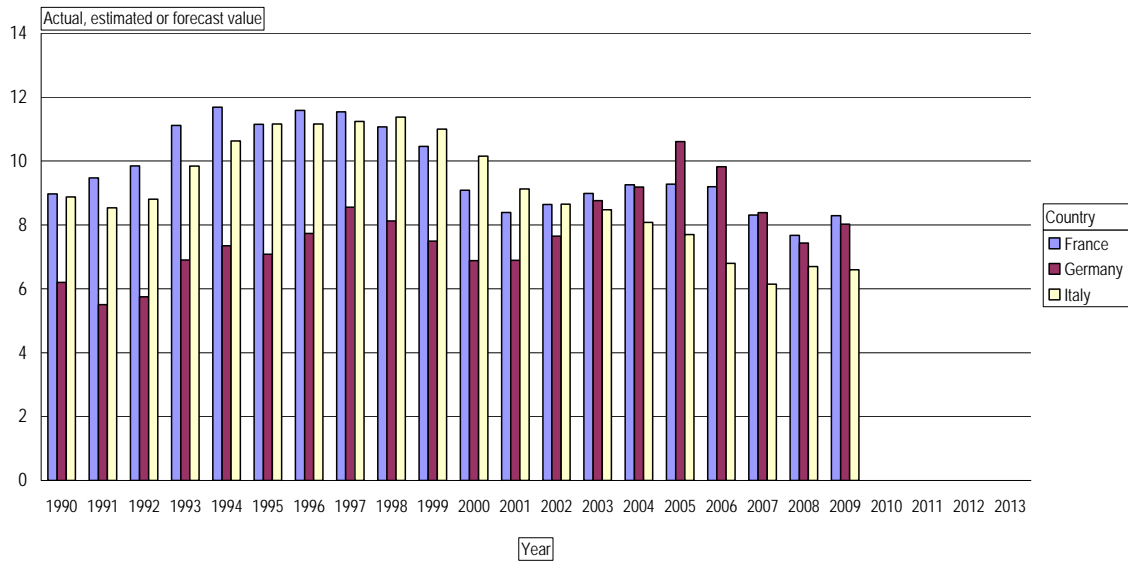
Measure | GDP, constant prices, annual % change

Data from IMF World Economic Outlook, October 2008



Measure|Unemployment rate, % rate

Data from IMF World Economic Outlook, October 2008



Measure|GDP per capita (Int \$, based on purchasing power parity)

Data from IMF World Economic Outlook, October 2008

